

200
1810 – 2010



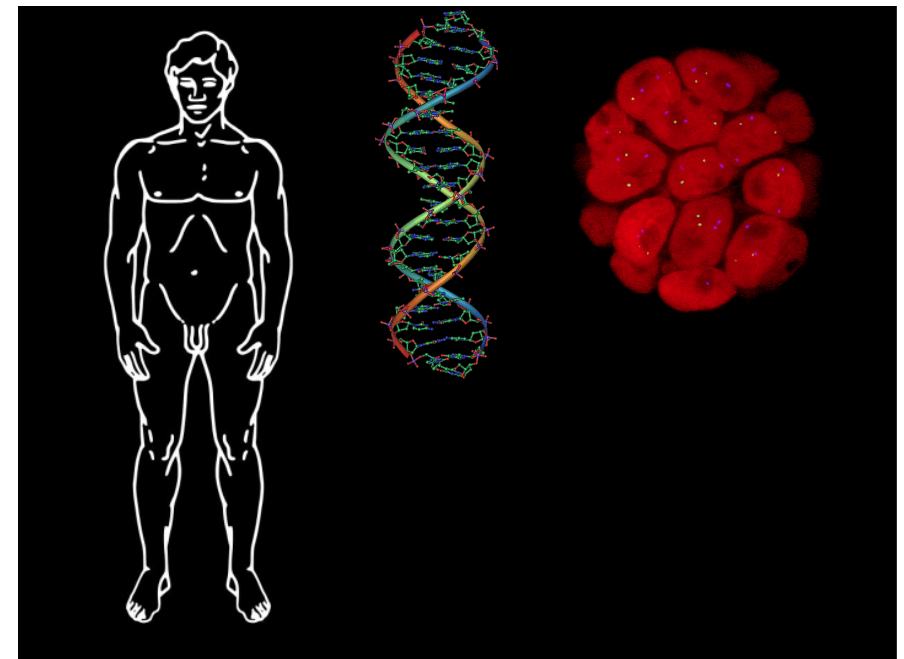
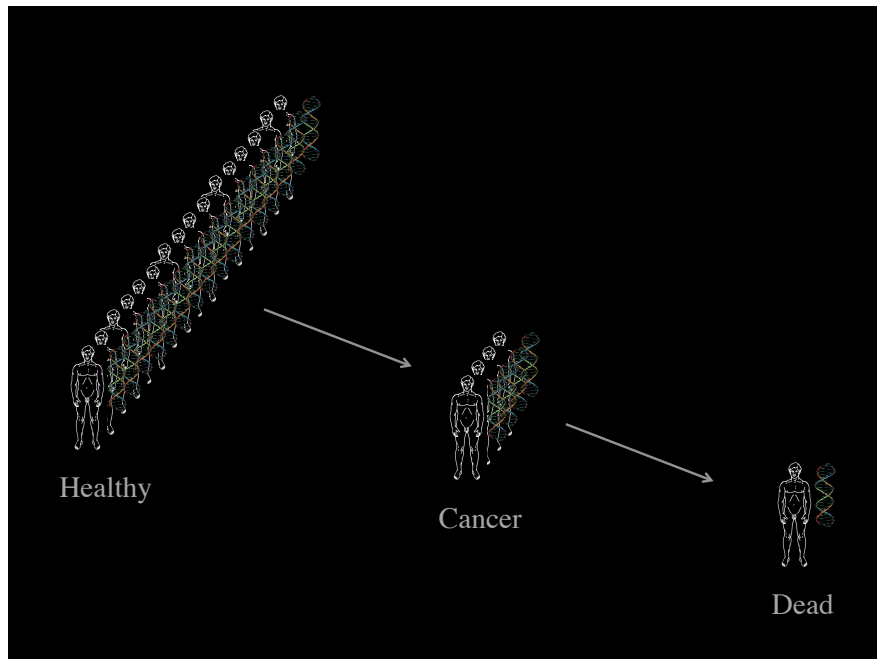
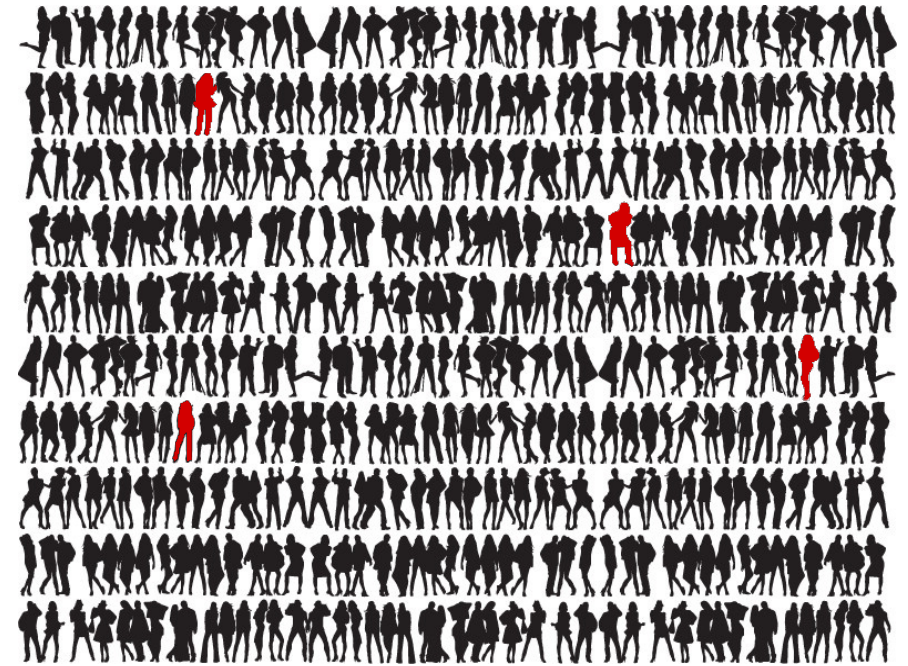
Karolinska
Institutet

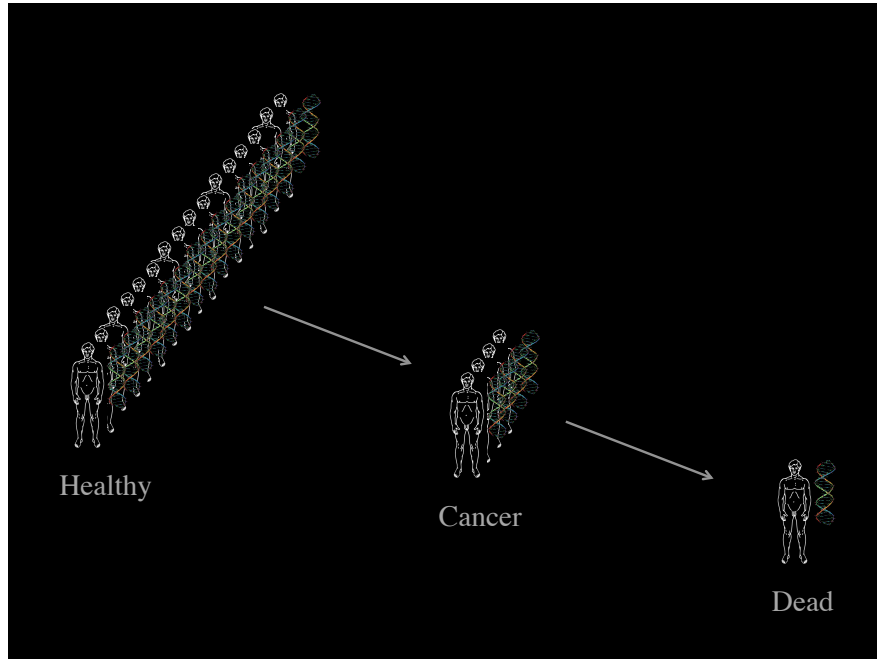
e-Science for Cancer Prevention and Cure

- a flagship project at the Swedish e-Science Research Center

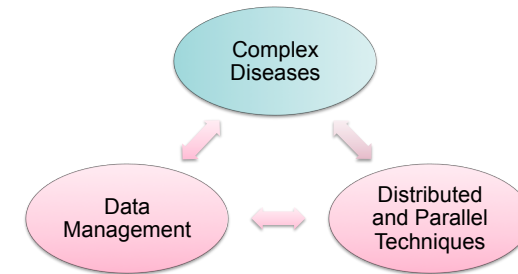
Ola Spjuth
ola.spjuth@ki.se

SERC





e-Science for Cancer Prevention and Cure

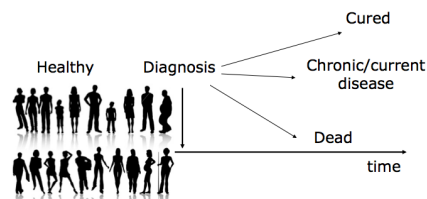


PIs: Juni Palmgren (COM), Jan-Eric Litton (DM)
Project leader: Ola Spjuth (DM)
Project co-leader: Martin Eklund (COM)

Aims in short

Use statistical modeling and data integration in cancer research

- Individualized prevention strategies
- Individualized treatments



Stora prostata-cancerstudien:

STHLM 2

Stora nationella bröstcancerstudien:

Karma

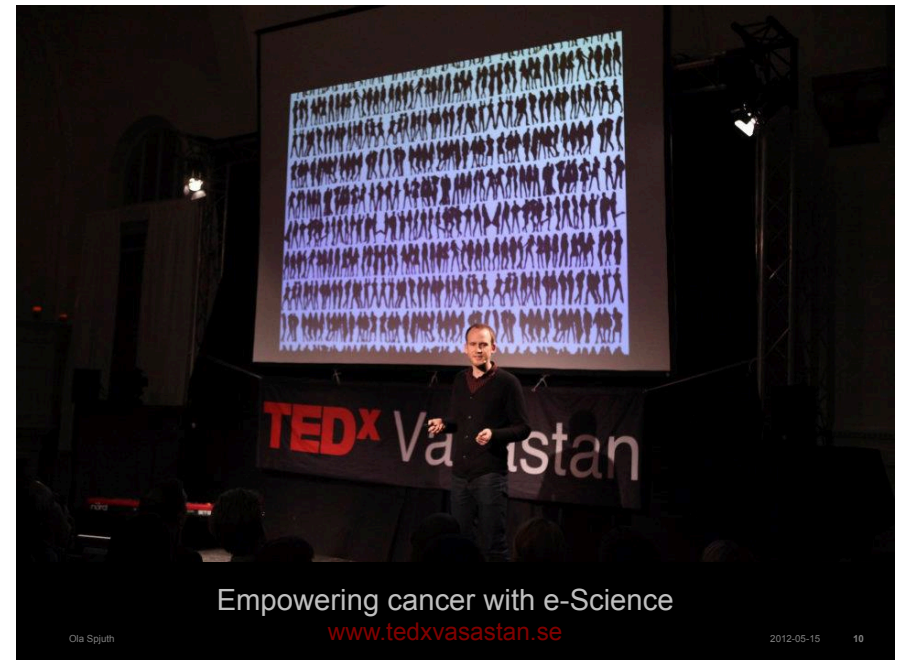
CRisP
The Cancer Risk Prediction Center

eCPC work packages

- **WP1:** Platform and infrastructure development
→ PI: Ola Spjuth, Jan-Eric Litton
- **WP2:** Managing sensitive data in distributed environments
→ PI: Jim Dowling
- **WP3:** Cancer microsimulation
→ PI: Juni Palmgren
- **WP4:** Cancer systems biology
→ PI: Sampsa Hautaniemi
- **WP5:** Prediction and screening models
→ PI: Keith Humphreys

Deliverables

- Project start: Jan 2012 → Still at planning stage
- A general plugin-based system for cancer (disease modeling)
 - Start with breast, prostate, and cervix cancer
- A graphical end-user tool where researchers can test scenarios and hypothesis *in silico* regarding e.g. prevention strategies
- Towards decision support when selecting treatments (personalized medicine)



- Thank you -

<http://e-science.se/community/eCPC>

Ola Spjuth
ola.spjuth@ki.se